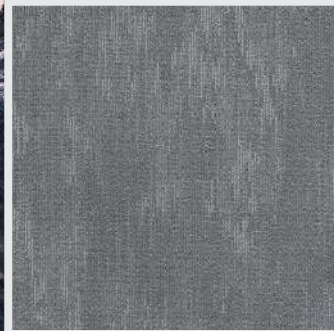




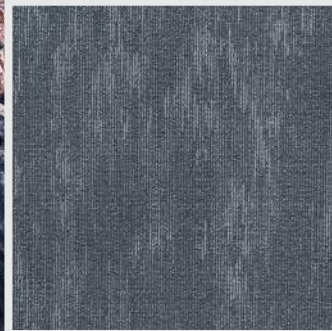
# UNITY

MaxLustre PP | BioFlex Bitumen Back™

## FULL COLOR RANGE



M9002-1  
**UNITY STONE**



M9002-2  
**UNITY STEEL**

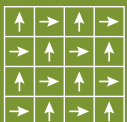


M9002-3  
**UNITY BLACK**



M9002-5  
**UNITY NAVY**

### Recommended Laying Patterns

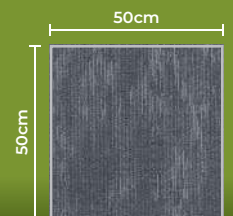


Quarter Turn

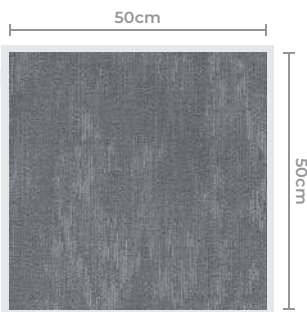
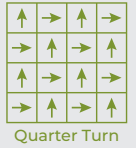
### Product Specification

<b>Fibre</b>	MaxLustre PP
<b>Construction</b>	1/12" Multi-Level Loop
<b>Pile Weight</b>	610gm/m <sup>2</sup> or 18oz/yd <sup>2</sup>
<b>Pile Height</b>	2.5 - 3.5mm
<b>Total Thickness</b>	4.5 - 5.5mm
<b>Backing</b>	BioFlex Bitumen Back™

### Standard Size



PP



P9002-1  
**UNITY STONE**

## PRODUCT SPECIFICATION

<b>CONSTRUCTION</b>	1/12" Multi-Level Loop
<b>FIBRE</b>	MaxLustre PP
<b>PILE WEIGHT</b>	610gm/m <sup>2</sup> or 18oz/yd <sup>2</sup>
<b>PILE HEIGHT</b>	2.5 - 3.5mm
<b>TOTAL THICKNESS</b>	4.5 - 5.5mm
<b>BACKING</b>	BioFlex Bitumen Back™
<b>NO. OF TILES/ BOX</b>	20 pcs / 54sqft (5sqm)



**AMAZONESSENTIALS®**  
carpet tiles

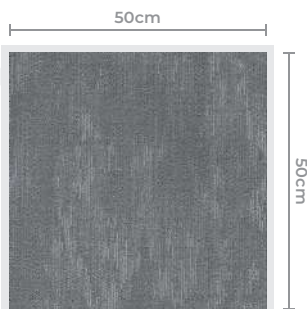
**UNITY**

MaxLustre PP | BioFlex Bitumen Back™

PP



UNITY



P9002-1  
**UNITY STONE**

## PRODUCT SPECIFICATION

<b>CONSTRUCTION</b>	1/12" Multi-Level Loop
<b>FIBRE</b>	MaxLustre PP
<b>PILE WEIGHT</b>	610gm/m <sup>2</sup> or 18oz/yd <sup>2</sup>
<b>PILE HEIGHT</b>	2.5 - 3.5mm
<b>TOTAL THICKNESS</b>	4.5 - 5.5mm
<b>BACKING</b>	BioFlex Bitumen Back™
<b>NO. OF TILES/ BOX</b>	20 pcs / 54sqft (5sqm)

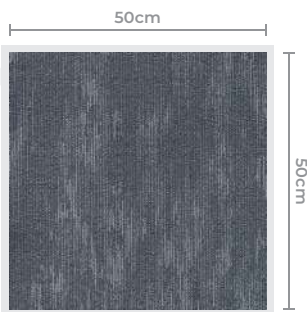
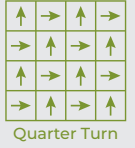


**AMAZONESSENTIALS®**  
carpet tiles

**UNITY**

MaxLustre PP | BioFlex Bitumen Back™

PP



P9002-2  
**UNITY STEEL**

## PRODUCT SPECIFICATION

<b>CONSTRUCTION</b>	1/12" Multi-Level Loop
<b>FIBRE</b>	MaxLustre PP
<b>PILE WEIGHT</b>	610gm/m <sup>2</sup> or 18oz/yd <sup>2</sup>
<b>PILE HEIGHT</b>	2.5 - 3.5mm
<b>TOTAL THICKNESS</b>	4.5 - 5.5mm
<b>BACKING</b>	BioFlex Bitumen Back™
<b>NO. OF TILES/ BOX</b>	20 pcs / 54sqft (5sqm)

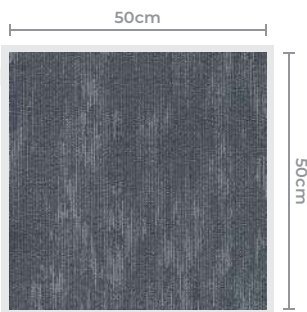


**AMAZONESSENTIALS®**  
carpet tiles

**UNITY**

MaxLustre PP | BioFlex Bitumen Back™

PP



P9002-2  
**UNITY STEEL**

## PRODUCT SPECIFICATION

**CONSTRUCTION** 1/12" Multi-Level Loop

**FIBRE** MaxLustre PP

**PILE WEIGHT** 610gm/m<sup>2</sup> or 18oz/yd<sup>2</sup>

**PILE HEIGHT** 2.5 - 3.5mm

**TOTAL THICKNESS** 4.5 - 5.5mm

**BACKING** BioFlex Bitumen Back™

**NO. OF TILES/ BOX** 20 pcs / 54sqft (5sqm)

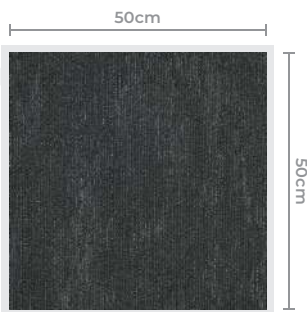
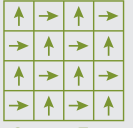


**AMAZONESSENTIALS®**  
carpet tiles

**UNITY**

MaxLustre PP | BioFlex Bitumen Back™

PP



P9002-3  
**UNITY BLACK**

## PRODUCT SPECIFICATION

<b>CONSTRUCTION</b>	1/12" Multi-Level Loop
<b>FIBRE</b>	MaxLustre PP
<b>PILE WEIGHT</b>	610gm/m <sup>2</sup> or 18oz/yd <sup>2</sup>
<b>PILE HEIGHT</b>	2.5 - 3.5mm
<b>TOTAL THICKNESS</b>	4.5 - 5.5mm
<b>BACKING</b>	BioFlex Bitumen Back™
<b>NO. OF TILES/ BOX</b>	20 pcs / 54sqft (5sqm)

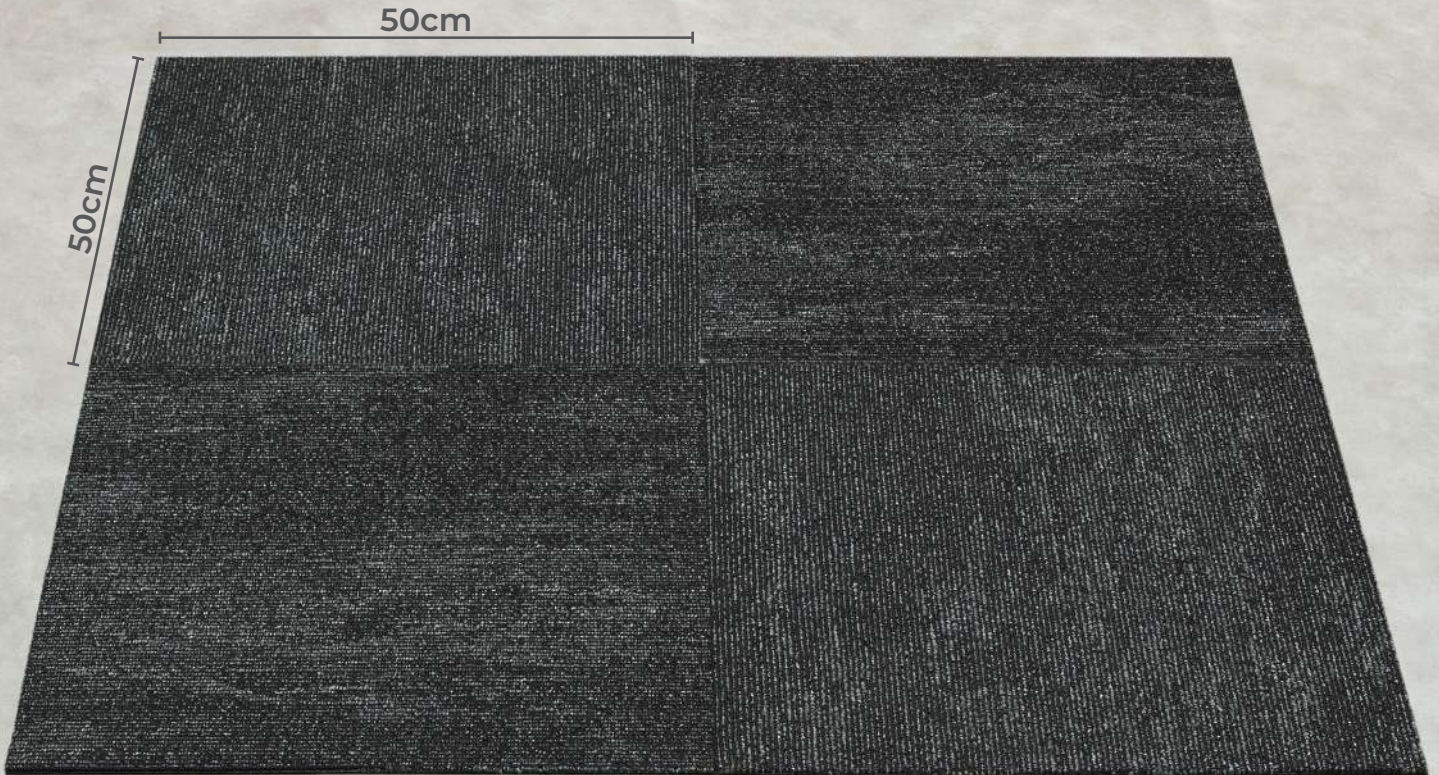


**AMAZONESSENTIALS**  
carpet tiles

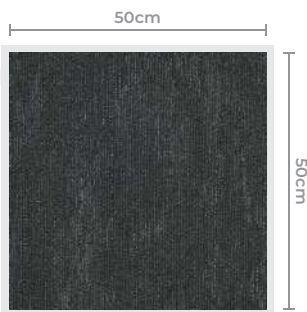
**UNITY**

MaxLustre PP | BioFlex Bitumen Back™

PP



UNITY



P9002-3  
**UNITY BLACK**

## PRODUCT SPECIFICATION

**CONSTRUCTION** 1/12" Multi-Level Loop

**FIBRE** MaxLustre PP

**PILE WEIGHT** 610gm/m<sup>2</sup> or 18oz/yd<sup>2</sup>

**PILE HEIGHT** 2.5 - 3.5mm

**TOTAL THICKNESS** 4.5 - 5.5mm

**BACKING** BioFlex Bitumen Back™

**NO. OF TILES/ BOX** 20 pcs / 54sqft (5sqm)

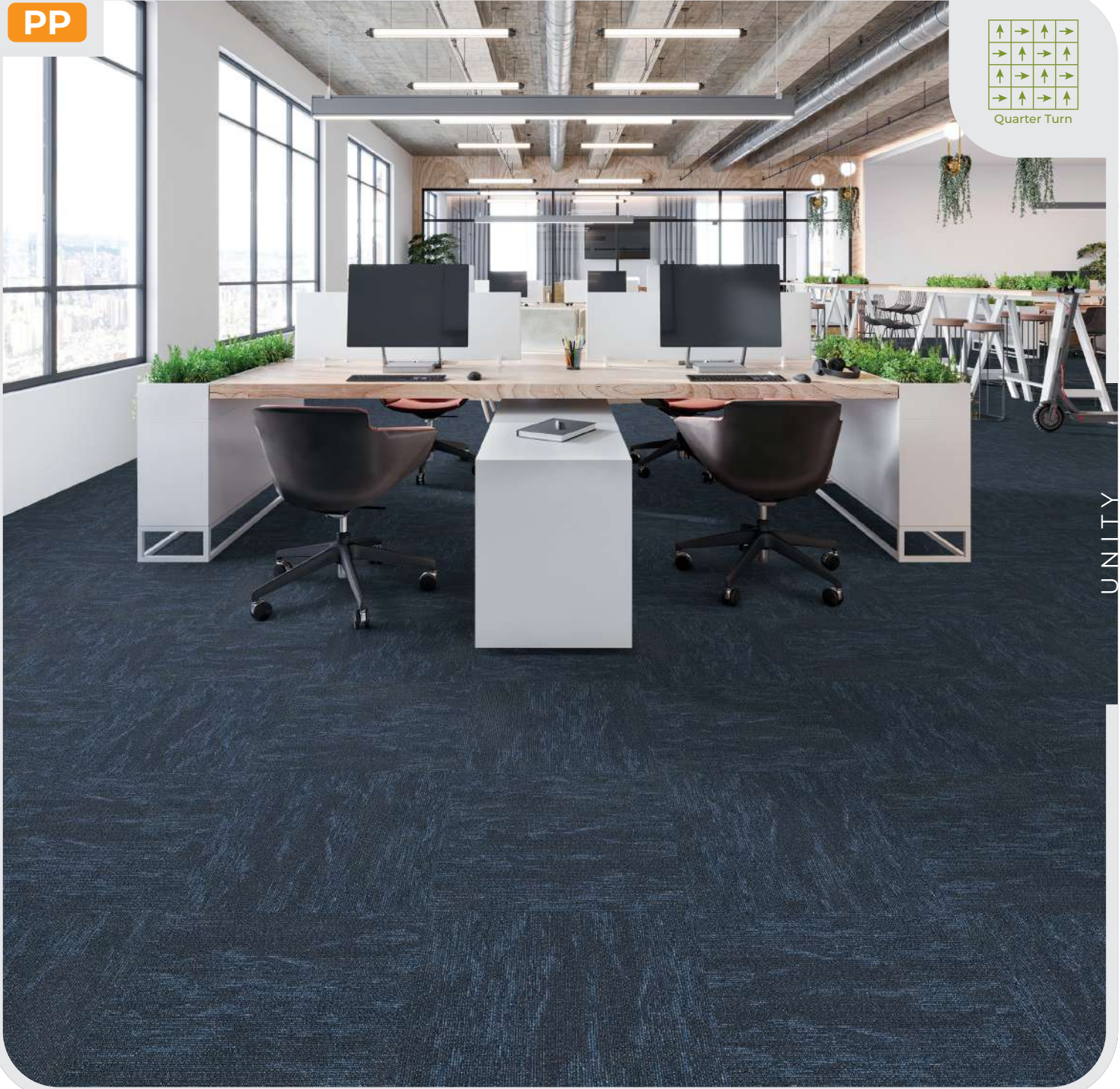
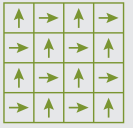


**AMAZONESSENTIALS®**  
carpet tiles

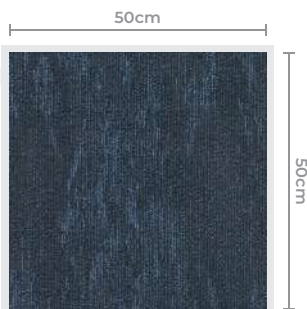
**UNITY**

MaxLustre PP | BioFlex Bitumen Back™

PP



UNITY



P9002-5  
**UNITY NAVY**

## PRODUCT SPECIFICATION

<b>CONSTRUCTION</b>	1/12" Multi-Level Loop
<b>FIBRE</b>	MaxLustre PP
<b>PILE WEIGHT</b>	610gm/m <sup>2</sup> or 18oz/yd <sup>2</sup>
<b>PILE HEIGHT</b>	2.5 - 3.5mm
<b>TOTAL THICKNESS</b>	4.5 - 5.5mm
<b>BACKING</b>	BioFlex Bitumen Back™
<b>NO. OF TILES/ BOX</b>	20 pcs / 54sqft (5sqm)

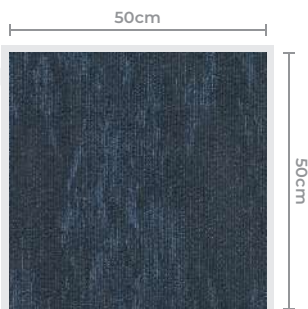


**AMAZONESSENTIALS®**  
carpet tiles

**UNITY**

MaxLustre PP | BioFlex Bitumen Back™

PP



P9002-5  
**UNITY NAVY**

## PRODUCT SPECIFICATION

**CONSTRUCTION** 1/12" Multi-Level Loop

**FIBRE** MaxLustre PP

**PILE WEIGHT** 610gm/m<sup>2</sup> or 18oz/yd<sup>2</sup>

**PILE HEIGHT** 2.5 - 3.5mm

**TOTAL THICKNESS** 4.5 - 5.5mm

**BACKING** BioFlex Bitumen Back™

**NO. OF TILES/ BOX** 20 pcs / 54sqft (5sqm)



# UNITY

MaxLustre PP | BioFlex Bitumen Back™

## PRODUCT SPECIFICATION

<b>Construction</b>	Multi-level Loop
<b>Fiber</b>	MaxLustre PP
<b>Gauge</b>	1/12"
<b>Pile Weight</b>	610gm/m <sup>2</sup> or 18oz/yd <sup>2</sup>
<b>Pile Height</b>	2.5 - 3.5mm
<b>Total Thickness</b>	4.5 - 5.5mm
<b>Backing</b>	BioFlex Bitumen Back™
<b>Tile Size</b>	50cm x 50cm
<b>Package</b>	20pcs / 54sqft (5m <sup>2</sup> )

## ENVIRONMENTAL SPECIFICATION

<b>Sustainability</b>	Production that adheres to ISO14001 and ISO9001 with all yarns used are Solution dyed to minimize use of water and exclude any effluent.
-----------------------	--

## PERFORMANCE SPECIFICATION

<b>Static Electricity</b>	Permanent lifetime protection - less than <b>3.5kV</b>
<b>Lodging-Resistance</b>	Superior fibre resistance
<b>Wear Warranty</b>	Warranted not to lose more than 15% pile fibre by weight under normal commercial use within 5 years
<b>Dimensional Stability</b>	Warranted not to change in size by more than 0.5mm, as well as resistant to doming and dishing under normal use.
<b>Color Fastness to Rubbing</b>	GB/T3920-2008 Standard: >Grade 4 for dry rubbing >Grade 3 for wet rubbing



Certified to: QB1 2755:2005  
Certification No.: PK011916



Certified to: SIRIM ECO 035 : 2012  
Certification No.: EL000212



PRODUCT CERTIFIED FOR  
LOW VOC EMISSIONS  
(US EPA)



Indoor Air Quality  
Associated Testing Program  
carpet-nub.org

