



# AMAZONMODULO®

luxury carpet tiles



**SIRIM**  
Certified to: QB/T 2755 : 2005  
Certification No.: PC011916



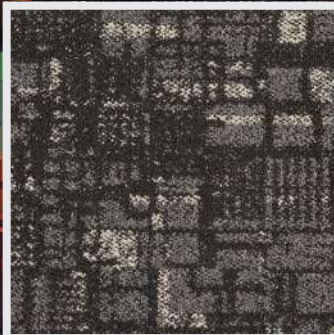
**SIRIM**  
ECO-LABEL  
Low VOC  
Certified to: SIRIM ECO 035 : 2012  
Certification No.: EL000212

# PIXEL

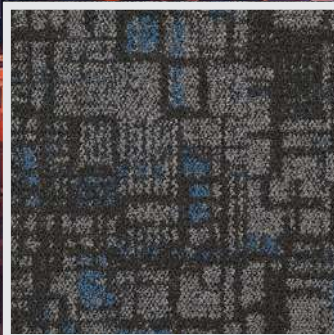
MaxLustre PP | BioFlex Bitumen Back™

COLORPOINT

## FULL COLOR RANGE



M9008-1  
**PIXEL PEARL**



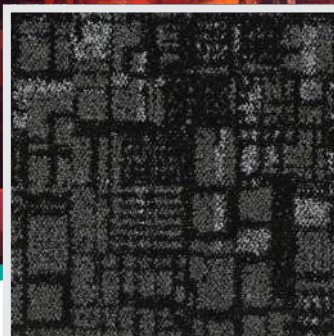
M9008-2  
**PIXEL CAROLINA**



M9008-3  
**PIXEL AMBER**



M9008-5  
**PIXEL IVORY**

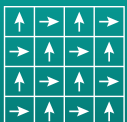


M9008-6  
**PIXEL ASH**

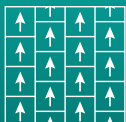


M9008-9  
**PIXEL CRIMSON**

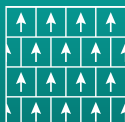
### Recommended Laying Patterns



Quarter Turn



Ashlar

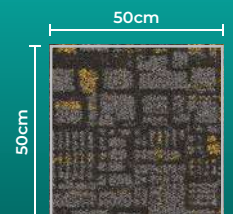


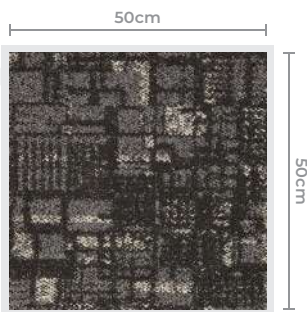
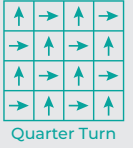
Brick

### Product Specification

<b>Fibre</b>	MaxLustre PP
<b>Construction</b>	1/12" Multi-Level Loop <b>Color Point</b>
<b>Pile Weight</b>	750gm/m <sup>2</sup> or 22oz/yd <sup>2</sup>
<b>Pile Height</b>	2.3mm - 4.5mm
<b>Total Thickness</b>	5.0mm - 6.0mm
<b>Backing</b>	BioFlex Bitumen Back™

### Standard Size



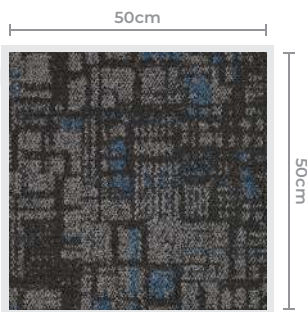
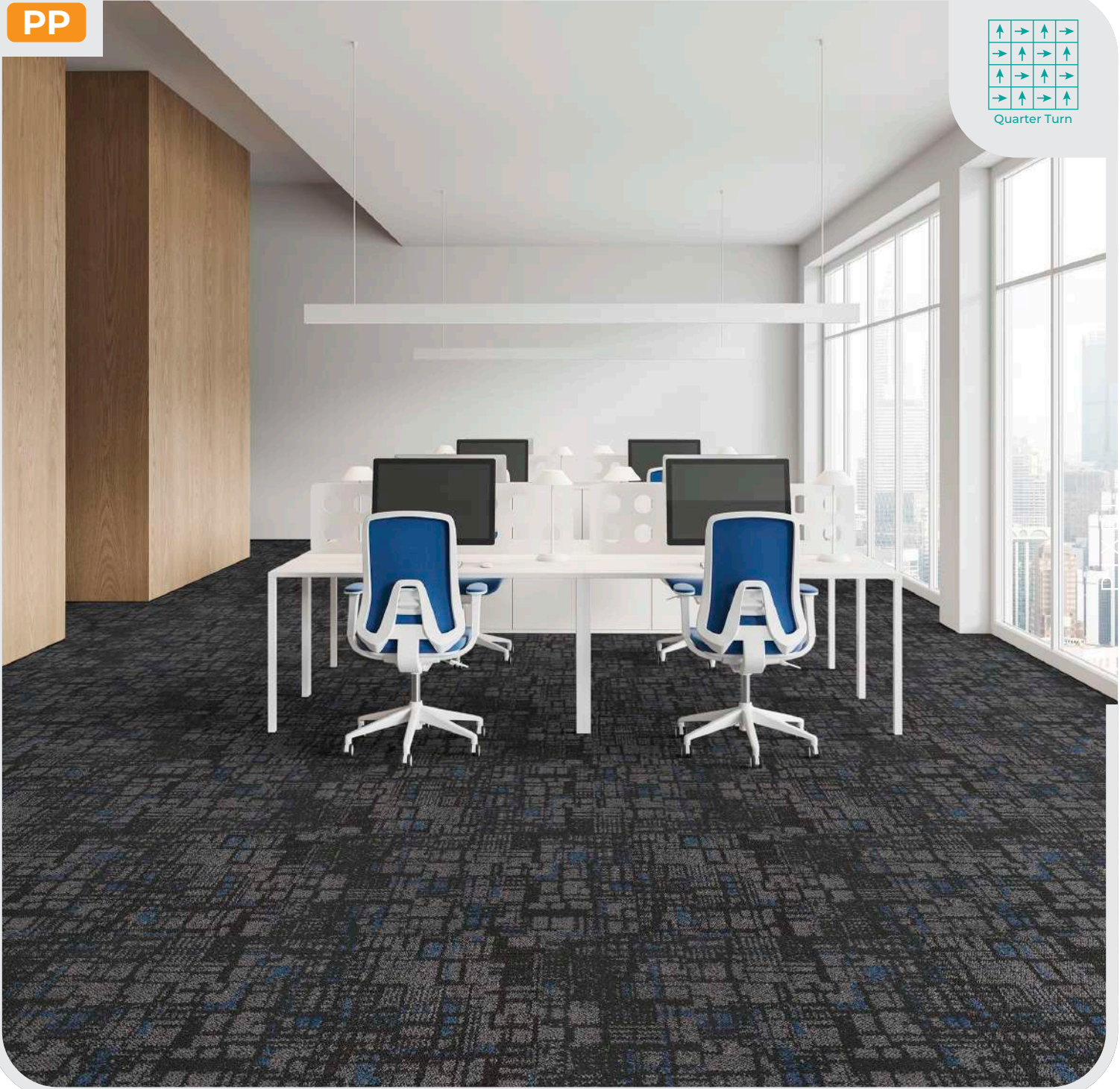
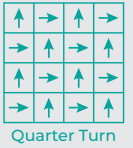


M9008-1  
**PIXEL PEARL**

## PRODUCT SPECIFICATION

<b>CONSTRUCTION</b>	1/12" Multi-Level Loop, <b>Color Point</b>
<b>FIBRE</b>	MaxLustre PP
<b>PILE WEIGHT</b>	750gm/m <sup>2</sup> or 22oz/yd <sup>2</sup>
<b>PILE HEIGHT</b>	2.3mm - 4.5mm
<b>TOTAL THICKNESS</b>	5.0mm - 6.0mm
<b>BACKING</b>	BioFlex Bitumen Back™
<b>NO. OF TILES/ BOX</b>	20 pcs / 54sqft (5sqm)

PP

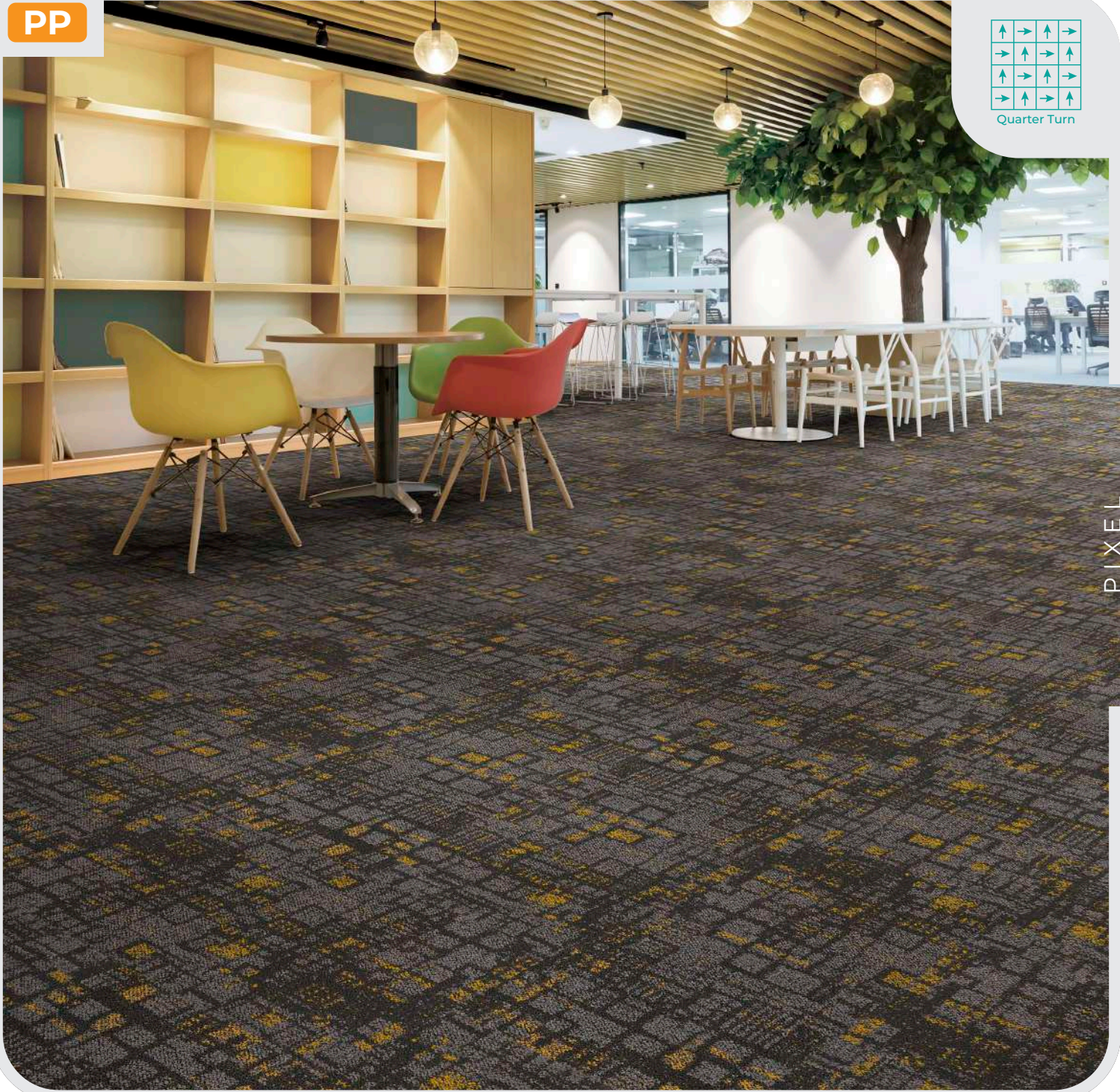
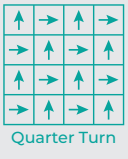


M9008-2  
PIXEL CAROLINA

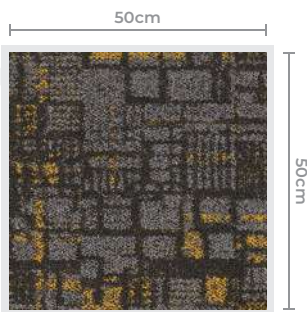
## PRODUCT SPECIFICATION

<b>CONSTRUCTION</b>	1/12" Multi-Level Loop, <b>Color Point</b>
<b>FIBRE</b>	MaxLustre PP
<b>PILE WEIGHT</b>	750gm/m <sup>2</sup> or 22oz/yd <sup>2</sup>
<b>PILE HEIGHT</b>	2.3mm - 4.5mm
<b>TOTAL THICKNESS</b>	5.0mm - 6.0mm
<b>BACKING</b>	BioFlex Bitumen Back™
<b>NO. OF TILES/ BOX</b>	20 pcs / 54sqft (5sqm)

PP



PIXEL

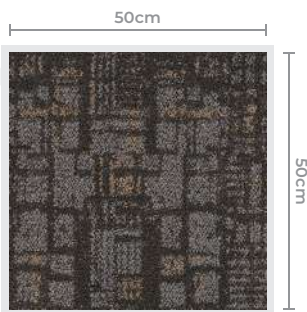
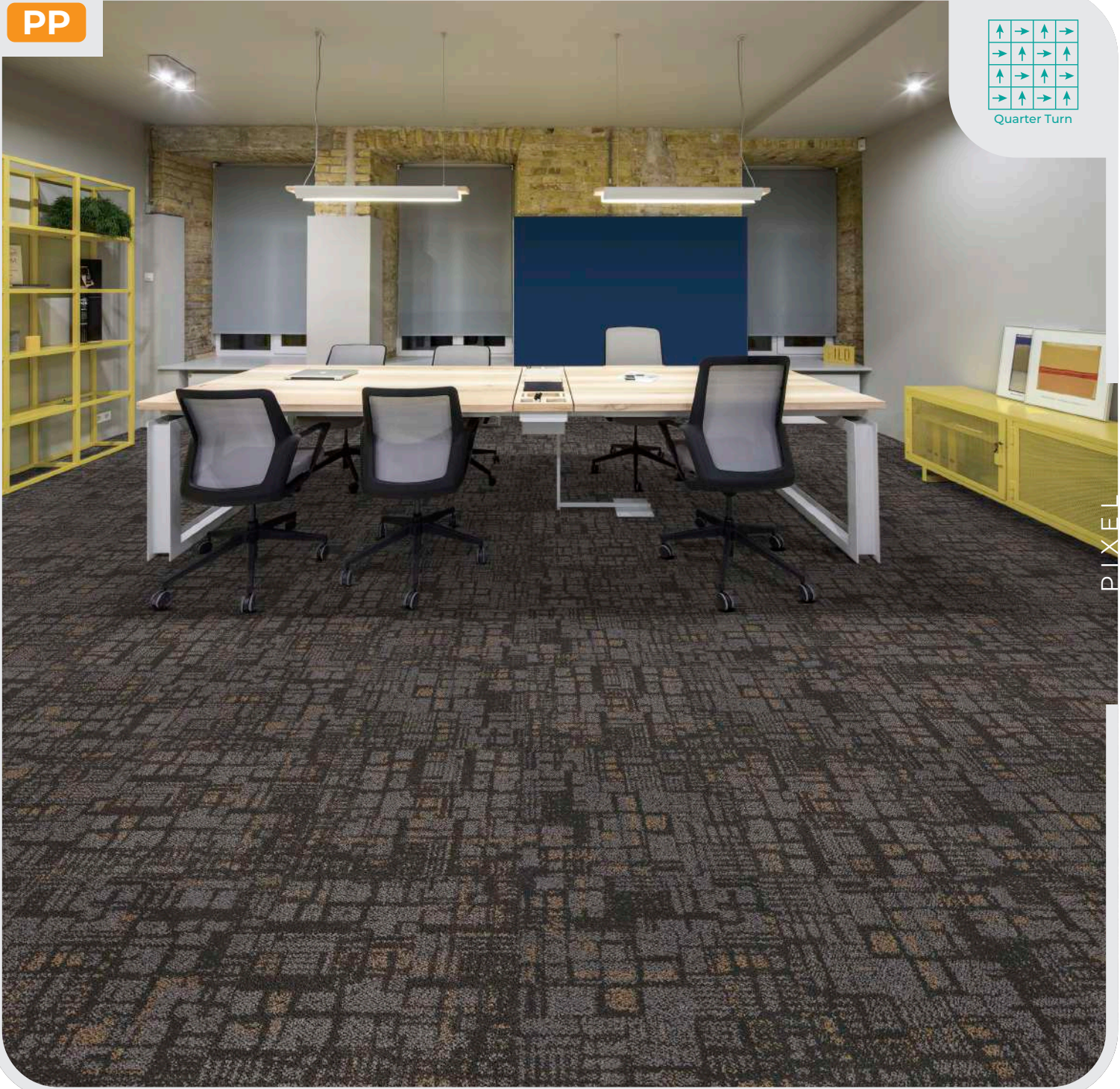
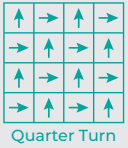


M9008-3  
PIXEL AMBER

## PRODUCT SPECIFICATION

<b>CONSTRUCTION</b>	1/12" Multi-Level Loop, <b>Color Point</b>
<b>FIBRE</b>	MaxLustre PP
<b>PILE WEIGHT</b>	750gm/m <sup>2</sup> or 22oz/yd <sup>2</sup>
<b>PILE HEIGHT</b>	2.3mm - 4.5mm
<b>TOTAL THICKNESS</b>	5.0mm - 6.0mm
<b>BACKING</b>	BioFlex Bitumen Back™
<b>NO. OF TILES/ BOX</b>	20 pcs / 54sqft (5sqm)

PP

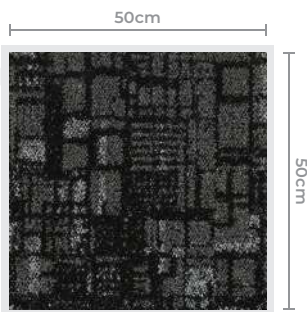
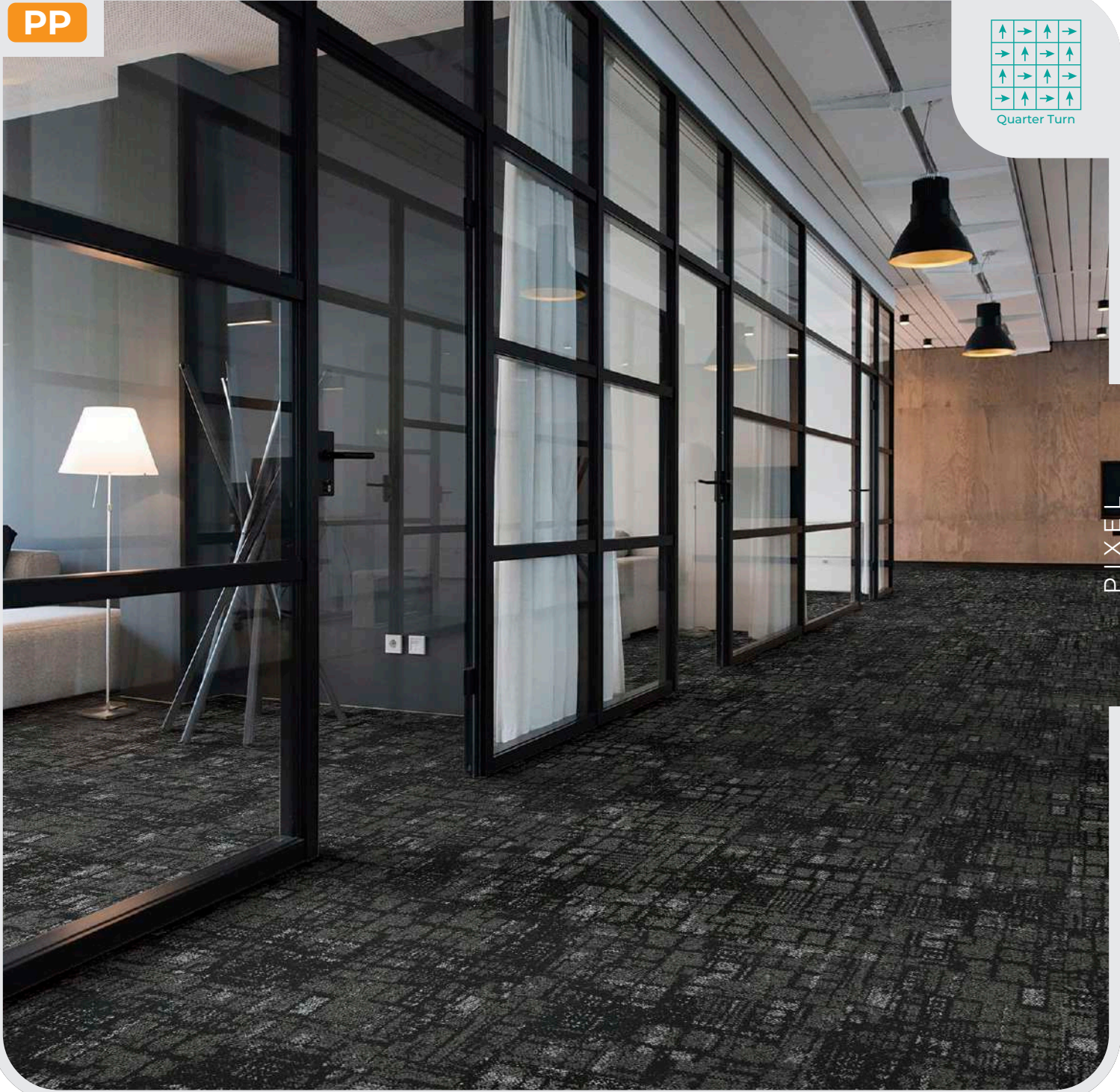
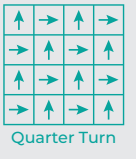


M9008-5  
**PIXEL IVORY**

## PRODUCT SPECIFICATION

<b>CONSTRUCTION</b>	1/12" Multi-Level Loop, <b>Color Point</b>
<b>FIBRE</b>	MaxLustre PP
<b>PILE WEIGHT</b>	750gm/m <sup>2</sup> or 22oz/yd <sup>2</sup>
<b>PILE HEIGHT</b>	2.3mm - 4.5mm
<b>TOTAL THICKNESS</b>	5.0mm - 6.0mm
<b>BACKING</b>	BioFlex Bitumen Back™
<b>NO. OF TILES/ BOX</b>	20 pcs / 54sqft (5sqm)

PP

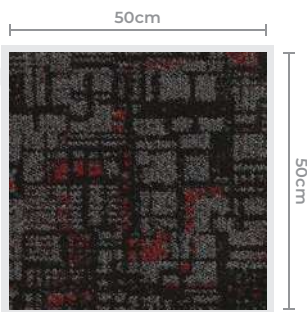
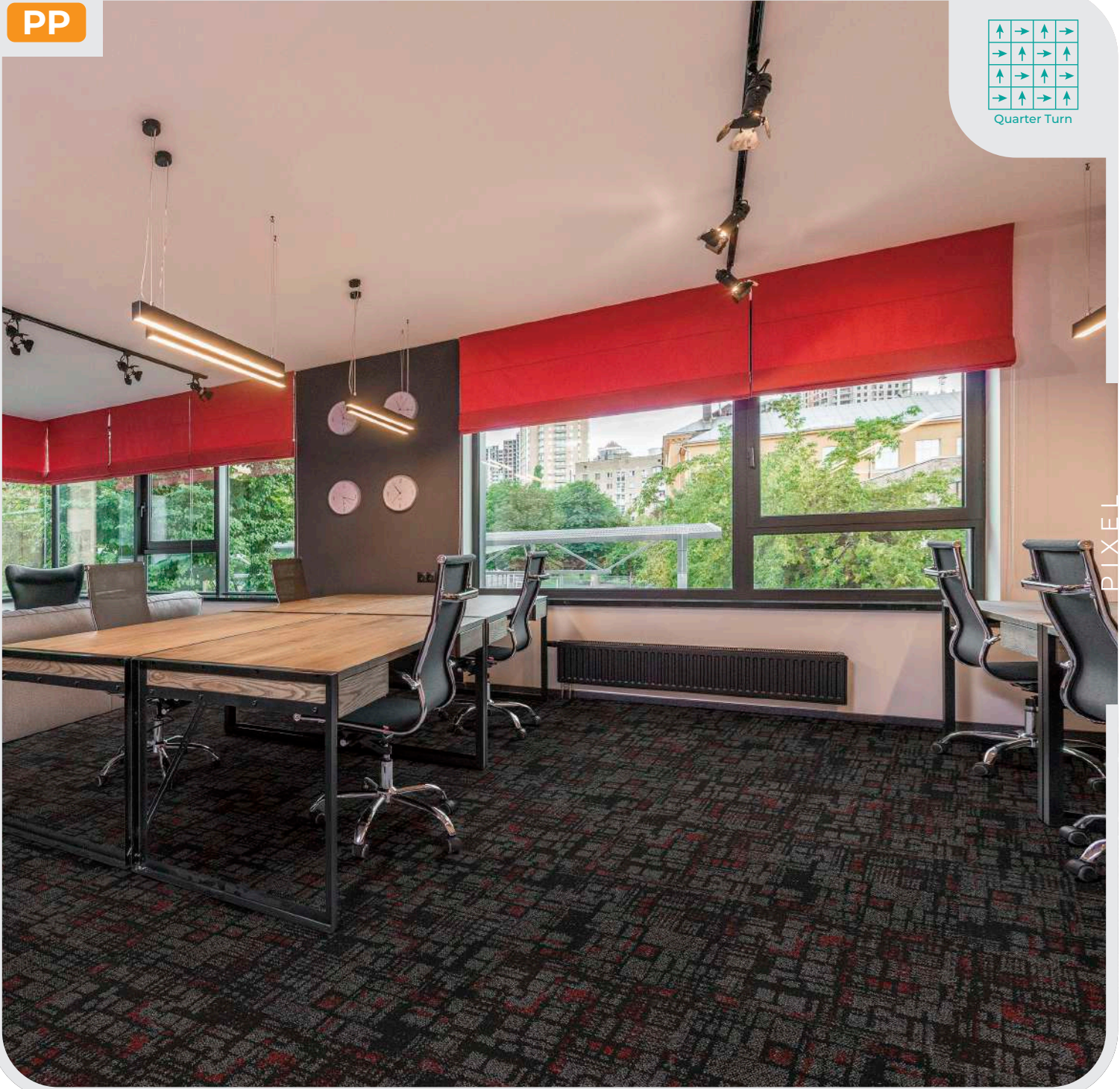
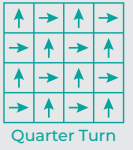


M9008-6  
PIXEL ASH

## PRODUCT SPECIFICATION

<b>CONSTRUCTION</b>	1/12" Multi-Level Loop, <b>Color Point</b>
<b>FIBRE</b>	MaxLustre PP
<b>PILE WEIGHT</b>	750gm/m <sup>2</sup> or 22oz/yd <sup>2</sup>
<b>PILE HEIGHT</b>	2.3mm - 4.5mm
<b>TOTAL THICKNESS</b>	5.0mm - 6.0mm
<b>BACKING</b>	BioFlex Bitumen Back™
<b>NO. OF TILES/ BOX</b>	20 pcs / 54sqft (5sqm)

PP



M9008-9  
**PIXEL CRIMSON**

## PRODUCT SPECIFICATION

<b>CONSTRUCTION</b>	1/12" Multi-Level Loop, <b>Color Point</b>
<b>FIBRE</b>	MaxLustre PP
<b>PILE WEIGHT</b>	750gm/m <sup>2</sup> or 22oz/yd <sup>2</sup>
<b>PILE HEIGHT</b>	2.3mm - 4.5mm
<b>TOTAL THICKNESS</b>	5.0mm - 6.0mm
<b>BACKING</b>	BioFlex Bitumen Back™
<b>NO. OF TILES/ BOX</b>	20 pcs / 54sqft (5sqm)



# PIXEL

MaxLustre PP | BioFlex Bitumen Back™

## COLORPOINT

### PRODUCT SPECIFICATION

Construction	Multi-level loop, <b>Color Point</b>
Fiber	MaxLustre PP
Gauge	1/12"
Pile Weight	750gm/m <sup>2</sup> or 22oz/yd <sup>2</sup>
Pile Height	2.3 - 4.5mm
Total Thickness	5.0 - 6.0mm
Backing	BioFlex Bitumen Back™
Tile Size	50cm x 50cm
Package	20pcs / 54sqft (5m <sup>2</sup> )

### ENVIRONMENTAL SPECIFICATION

Sustainability	Production that adheres to ISO14001 and ISO9001 with all yarns used are Solution dyed to minimize use of water and exclude any effluent.
----------------	--

### PERFORMANCE SPECIFICATION

TVOCs	Green Guard AQS Report no. 903193-13/ CRI Green Label Plus - <b>&lt;0.5mg/m<sup>2</sup>/hour</b>
Flammability	ASTM-D-2859-96 / FF 1-70 / 16 CFR 1630 - <b>Pass 8/8</b>
Flooring Radiant Panel	ASTM-E-648-15e1 - <b>29.2%</b>
Static Propensity	AATCC-134-2011 - <b>0.2 kV</b>
Color Fastness	AATCC-165 - <b>5/5</b>
Stain Resistance	AATCC-175-2003 - <b>Result: 10</b>
Dimensional Stability	ASTM-D7570(AACHEN/ISO2551) - <b>&lt;0.15%</b>
Smoke Density	ASTM-E-662-15a - <b>Ds(1.5)≤100 and Ds(4.0)≤200</b>
Roll Chair	ITTS-205 - <b>3.0</b>
Tuft Bind	ASTM-D-1335 - <b>7.1lbs</b>
Pilling & Fuzzing	ITTS 002 - <b>5/5</b>



Certified to: Q817:2005  
Certification No.: PK011916



Certified to: SIRIM ECO 035 : 2012  
Certification No.: EL000212



PRODUCT CERTIFIED FOR  
LOW VOC EMISSIONS  
(US EPA)



Indoor Air Quality  
Associated Society Program  
carpet-nub.org

