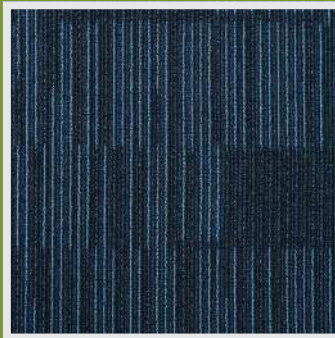




BASELINE

MaxLustre PP | Synth PVC Back™



M16-07
BASELINE NAVY

Recommended Laying Patterns

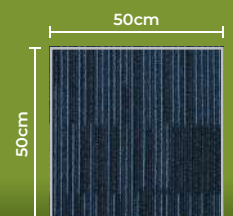


Quarter Turn

Product Specification

| | |
|------------------------|--|
| Fibre | MaxLustre PP |
| Construction | 1/12" Multi-Level Loop |
| Pile Weight | 750gm/m ² or 22oz/yd ² |
| Pile Height | 2.6mm - 4.5mm (±0.5mm) |
| Total Thickness | 6.5mm (±0.5mm) |
| Backing | Synth PVC Back™ |

Standard Size



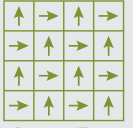


AMAZONESSENTIALS®
carpet tiles

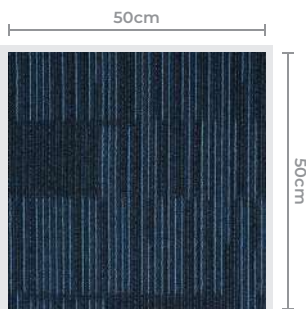
BASELINE

MaxLustre PP | Synth PVC Back™

PP



Quarter Turn



M16-07
BASELINE NAVY

PRODUCT SPECIFICATION

| | |
|--------------------------|--|
| CONSTRUCTION | 1/12" Multi-Level Loop |
| FIBRE | MaxLustre PP |
| PILE WEIGHT | 750gm/m ² or 22oz/yd ² |
| PILE HEIGHT | 2.6mm - 4.5mm (±0.5mm) |
| TOTAL THICKNESS | 6.5mm (±0.5mm) |
| BACKING | Synth PVC Back™ |
| NO. OF TILES/ BOX | 20 pcs / 54sqft (5sqm) |

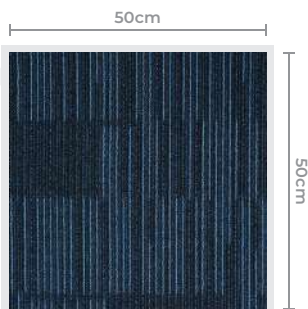
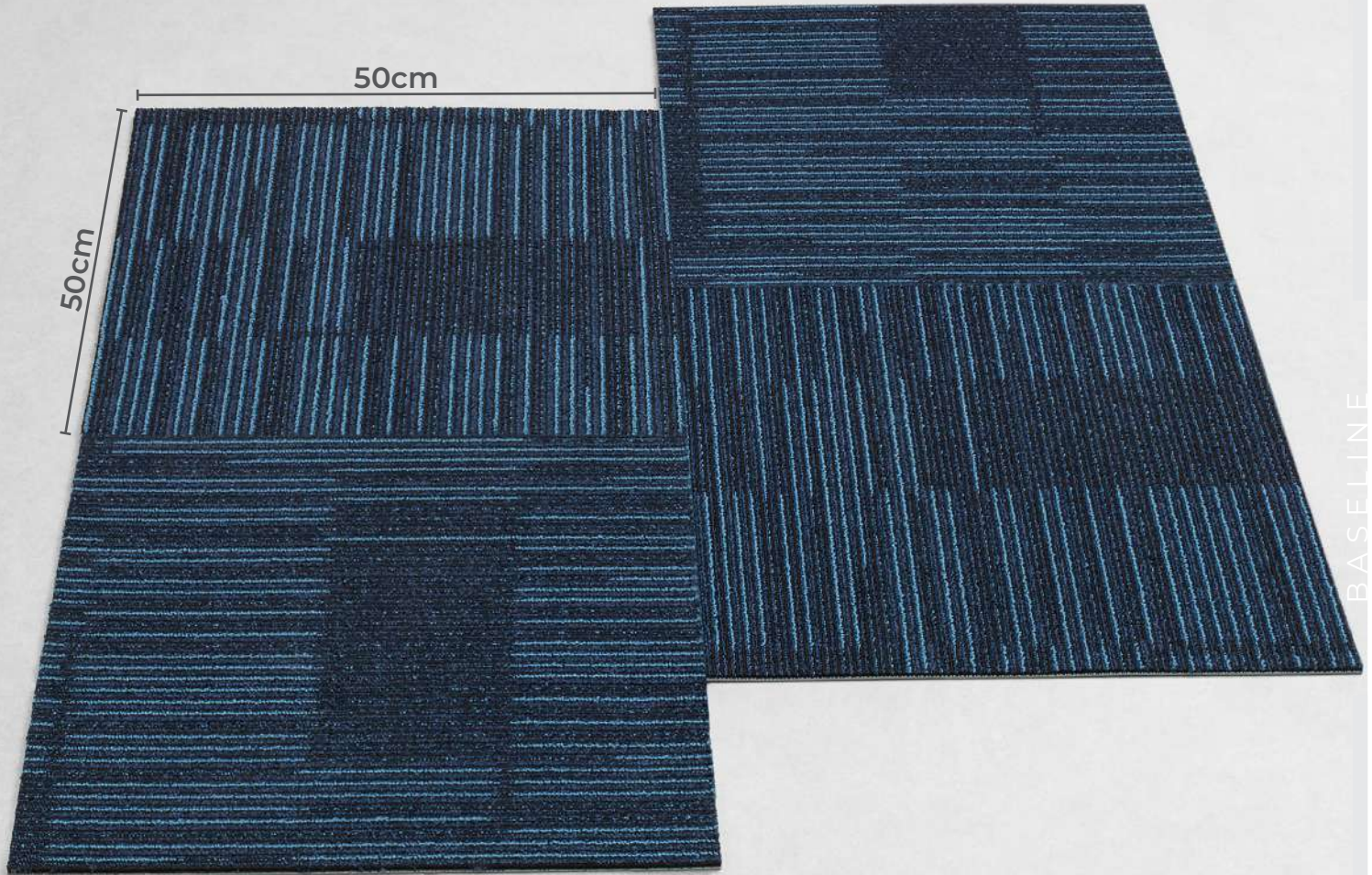


AMAZONESSENTIALS
carpet tiles

BASELINE

MaxLustre PP | Synth PVC Back™

PP



M16-07
BASELINE NAVY

PRODUCT SPECIFICATION

| | |
|--------------------------|--|
| CONSTRUCTION | 1/12" Multi-Level Loop |
| FIBRE | MaxLustre PP |
| PILE WEIGHT | 750gm/m ² or 22oz/yd ² |
| PILE HEIGHT | 2.6mm - 4.5mm (±0.5mm) |
| TOTAL THICKNESS | 6.5mm (±0.5mm) |
| BACKING | Synth PVC Back™ |
| NO. OF TILES/ BOX | 20 pcs / 54sqft (5sqm) |



BASELINE

MaxLustre PP | Synth PVC Back™

PRODUCT SPECIFICATION

| | |
|------------------------|--|
| Construction | Tufted Textured Loop Pile |
| Fiber | MaxLustre PP |
| Gauge | 1/12" |
| Pile Weight | 750gm/m ² or 22oz/yd ² |
| Pile Height | 2.6mm - 4.5mm (±0.5mm) |
| Total Thickness | 6.5mm (±0.5mm) |
| Backing | Synth PVC Back™ |
| Tile Size | 50cm x 50cm |
| Package | 20pcs / 54sqft (5m ²) |

ENVIRONMENTAL SPECIFICATION

| | |
|-----------------------|---|
| Sustainability | Production that adheres to ISO14001 & ISO9001 standards |
|-----------------------|---|

PERFORMANCE SPECIFICATION

| | |
|---------------------------------|---|
| TVOCs | Within CRI limits of less than 0.5mg/m²/hour |
| Flammability | Based on ASTM-D-2859 Pill Test - Result: 7/8 |
| Flooring Radiant Panel | Based on ASTM-E-648 - Result: ≥0.45 watts/cm² |
| Static Propensity | Permanent Lifetime Protection - less than 3.5kV |
| Electrostatic Propensity | Avg Neg. 0.4/0.3 kV |
| Colour Fastness to Light | Based on AATCC-16E Test - Result: 4/5 |
| Stain Resistance | Based on AATCC-175-1993 - Result: 9 - No Residual Stain |
| Dimensional Stability | Warranted not to change in size by more that 2.4% |
| Roll Chair | Based on ITTS 205 - Result: 3.0 |
| Tuft Bind | Based on ASTM D 1335 - Result: 8.0 lbs |



Certified to: Q81 2755:2005
Certification No.: PK011916



Certified to: SIRIM ECO 035 : 2012
Certification No.: EL000212



PRODUCT CERTIFIED FOR
LOW VOC EMISSIONS
(VOC)



Indoor Air Quality
Assessment Testing Program
carpet-nub.org

